

Moisie-Eau Dorée Salmon Lodge, Moisie River

Weekly July 22, 2012 – August 18, 2012
\$5280.00 CAD (plus taxes)



Trip Description:

Moisie-Eau Dorée Salmon Outfitting Camp has exclusive Atlantic Salmon fishing rights for 21 kilometers along the imposing Moisie River, about 60 kilometers north of Sept-Îles. The camp was built in the 1950, now owned and operated by Pauline and Walter Murkens since 1996. Many excellent Atlantic Salmon holding pools surround the main camp with many others further away.

Itinerary:

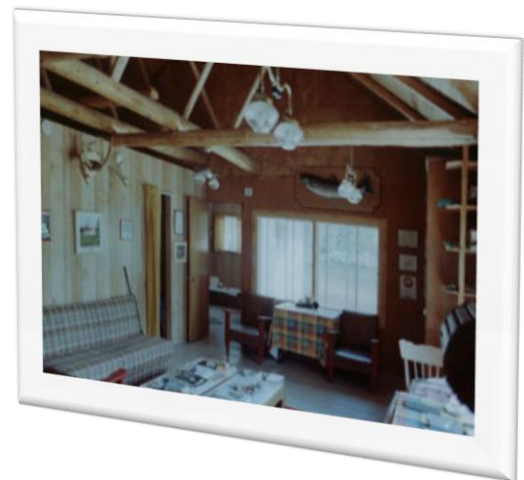
Day 1: Upon arrival at Moisie Eau Dorée, your host will welcome you with a cocktail, followed by the issuing of fishing licenses and a presentation of your upcoming itinerary. In the afternoon, you are free to fish salmon around the island. Dinner will be served at 7:00 pm

Day 2 -6: Depart for a day of fishing

Day 7: Depart after breakfast at the Lodge.

Price Includes:

- Guided fishing one on two
- Deluxe accommodations in main lodge
- Full board including dinner on the first day up to breakfast on the last day
- Snacks and beverages between meals
- Transportation to and from Sept Îles either helicopter or Floatplane
- Boat and gas



Not included:

Personal gear, alcoholic drinks, fishing licenses and tipping at your discretion (International Standard \$5-10.00 US/day/person)



The Moisie River is well-known for the impressive size of its Atlantic Salmon and was one of the favorite areas of the legendary fly fisherman and author, the late Lee Wulff. Every cast holds the probability of hooking up with a big Moisie Salmon, so your equipment should include a 9 foot fly fishing rod and 8 or 9 weight fly line. Your fishing reel should hold at least 200 yards of backing and for your tippet a minimum 15lb test is recommended. Standard salmon flies generally work well along with dry flies like the Green Machine and Bombers. Trout-flies could also come in handy.

The main lodge can accommodate 6 fishermen and is located on an island at the junction of the Moisie Dorée Rivers. A satellite camp is set up 9 kilometers upstream from the main camp accommodating another two anglers. This allows for 8 members to fish each week of our season. Many pools are fishable by either wading or from a canoe. In all instances a guide will accompany every two anglers. The fishing day starts early with a hot delicious breakfast awaiting hungry anglers at 7:00 a.m. Anglers fish until dark, approximately 9:00 p.m., returning to a hearty gourmet dinner and deserts.

All of our standard packages are Sunday to Saturday. You will arrive by 12:00 pm on Sunday and checkout Saturday at 11:00 am. Monday through Friday is spent fishing for Salmon with your guide.

Breakaway Classic Adventures
P.O. Box 442
Ellicottville, New York 14731
(716) 699-4835
www.breakawayclassicadventures.com
indrek@breakawayclassicadventures.com

